



54790 Grand River Avenue, New Hudson MI. 48165

Phone: 248-573-4934

www.icomnorthamerica.com

email: info@icomnorthamerica.com

ICOM JTG Liquid Injection Bi-Fuel Propane System is EPA certified for the 2010/2011 Ford E350/E450 model vehicles equipped with the 6.8L 2V engine.

**Go Green and Dramatically
Reduce Fuel Costs!**



The patented ICOM JTG Liquid Propane System is innovative and offers these advantages:

- Equal power, torque and drive ability of gasoline
- Cold climate reliability
- Reduces greenhouse gas emissions by up to 20%
- Dramatically reduced emissions
- Virtually no particulates
- Fuel range extended with the use of bi-fuel
- Extended service intervals

Distributed / Installed By:

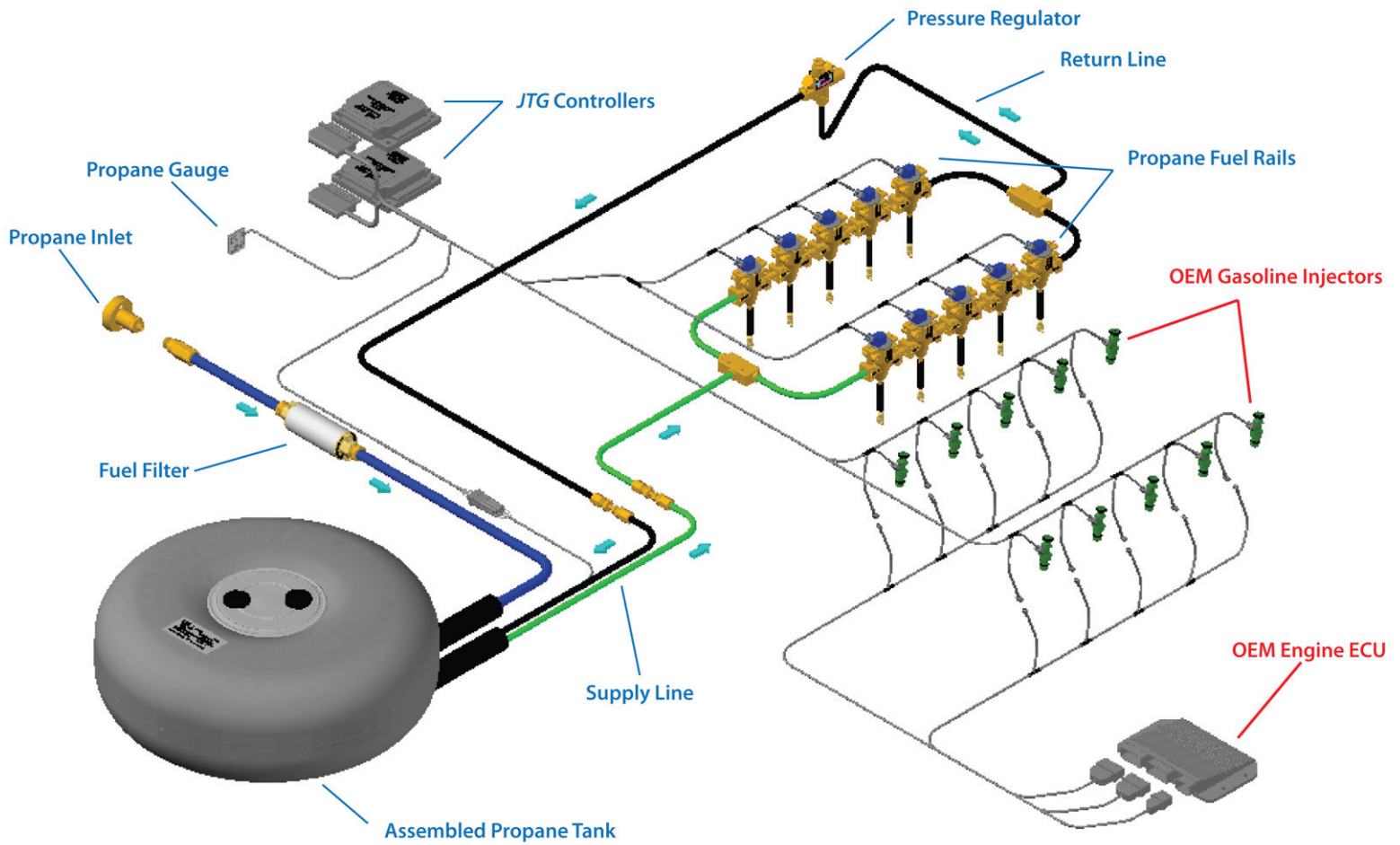


815 Wernsing Road • Jasper, IN 47546

1-800-827-7455

www.jasperengines.com

The fuel tank, fuel rails and hoses are all pre assembled - virtually 'plug and play'

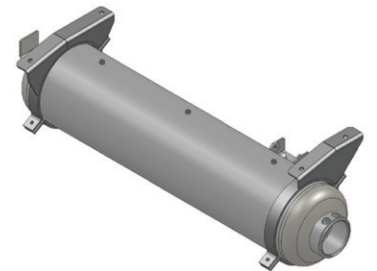


Available fuel tank options: (with usable gallons)

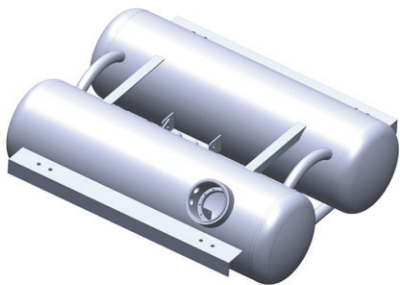
- 13 x 80 (33 USG)
- 13 x 60 (25 USG)
- 13 x 13 x 32 (25 USG)
- 14 x 14 x 31 (28 USG)
- 14 x 14 x 48 (45 USG)



13 x 60



14 x 14 x 31



14 x 14 x 48



13 x 13 x 32

